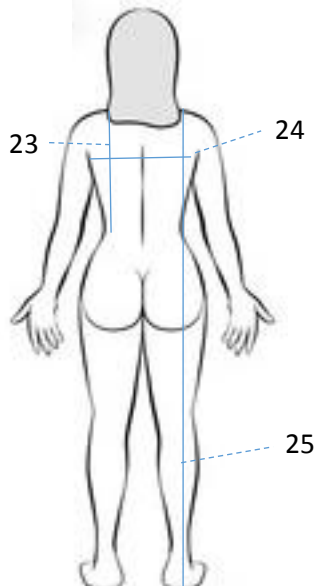
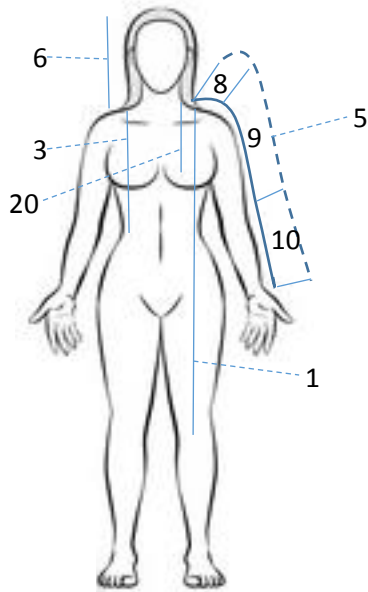
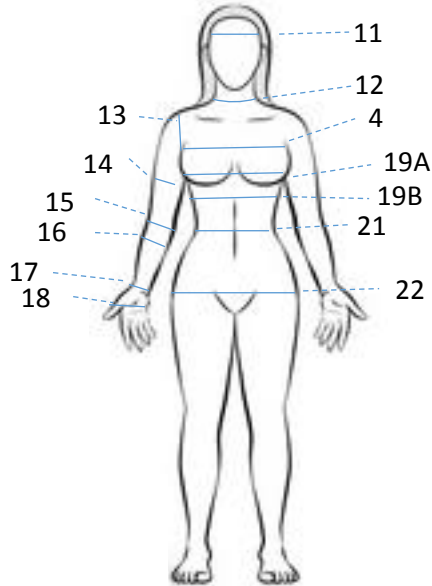


Quiverstock

Order Number:

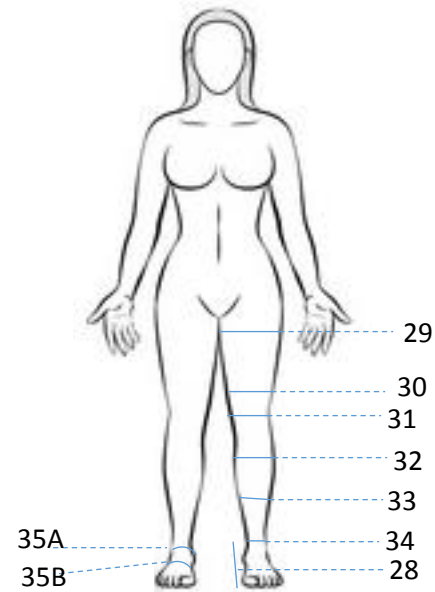
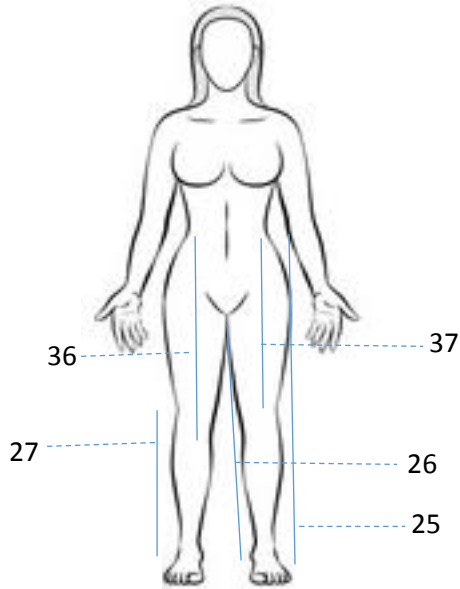
Measurement Chart



	HEIGHT (in cm or ft):	
	WEIGHT (in kg or pounds):	
1	Length from shoulder to knee	
2	Length of the gambeson / robe	
3	Length from the shoulder to waist	
4	Chest width	
5	Full arm length - neck to wrist	
6	Head height	
7	Collar height	
8	Neck to Shoulder	
9	Shoulder to elbow	
10	Elbow to wrist	
11	Head circumference	
12	Neck circumference	
13	Armpit circuit	
14	Bicep circumference	
15	Elbow circumference (bent)	
16	Forearm circumference	
17	Wrist circumference	
18	Hand circumference	
19A	Chest circumference over bust	
19B	Chest circumference under bust	
20	Shoulder to bust	
21	Waist circumference	
22	Hips / seat circumference	
23	Shoulder to true waist length on the back	
24	Back width	
25	Shoulder to ground - Front draped over bust	
	Shoulder to ground - Back into waist and draped over seat	

Quiverstock

Measurement Chart



25	Waist to ground length -full leg length at front	
	Waist to ground length -full leg length at side	
	Waist to ground length -full leg length at back	
26	Inner leg length	
27	Knee to ground length	
28	Foot length / shoe size	
29	Thigh circumference	
30	Above knee / lower thigh circumference	
31	Knee circumference	
32	Calf circumference	
33	Under calf circumference	
34	Ankle circumference	
35A	Circuit around heel & instep	
35B	Circuit around instep (centre of foot)	
36	Waist to the beginning of calf	
37	Waist to knee – at front	
	Waist to knee – at side	
	Waist to knee – at back	
38	Rise	